

CHOTTO

MATTE



SOHO | MANCHESTER | TORONTO | SAN FRANCISCO | RIYADH



CONTENT

Introduction

Nikkei Cuisine

Event Spaces:

- The Lava Lounge
- Bar And Lounge
- Main Floor
- Itamae
- First Floor
- Claude's
- Exclusive Hire

Bespoke

Contact



INTRODUCTION

Nestled within the heart of London's eclectic Soho district, Chotto Matte stands as an unrivalled icon of culinary innovation and cosmopolitan allure.

Revered for its groundbreaking Japanese Peruvian Cuisine, meticulously curated cocktails and an ambiance that sparks with magnetic energy, this is no ordinary dining destination - It's an immersive journey for the senses.

Step into the dynamic world of Chotto Matte, where our versatile event spaces stand ready to put on the perfect backdrop for your occasion. Whether it's a power lunch, an intimate dinner, or an exclusive celebration, our two-floor restaurant offers a tailored experience like no other.

Marvel at our chic contemporary interior, from the bold graffiti adorning our walls to the captivating theatrics of our Open Sushi Counter and the Robata grill, every corner tells a story.

NIKKEI CUISINE

Nikkei Cuisine is a unique culinary fusion that blends Japanese cooking techniques together with traditional Peruvian ingredients. At Chotto Matte you can expect a showcase of elevated Japanese Peruvian cuisine, artfully plated to perfection.

Combining these culinary traditions with locally sourced ingredients, internationally renowned Executive Chef Jordan Sclare takes an artistic approach, always keeping excellence at the forefront.

A celebration of fresh, local, high-quality ingredients, Chotto Matte is dedicated to providing an authentic, eco-conscious experience – working with producers who prioritise ethical farming practices.



EVENT SPACES



[Click here for a virtual tour of our spaces](#)



LAVA LOUNGE

Your Exclusive Escape

Perched on the Main Level Floor, the Lava Lounge is a sleek semi-private enclave that blends exclusivity with the vibrant pulse of the restaurant and bar. Perfect for magnetic gatherings, this refined space adapts effortlessly - whether you are hosting a chic dinner or an elevated drinks affair. Here, sophistication meets energy, creating the ultimate backdrop for unforgettable social moments.

Capacity

Seated: 60

Standing: 80

BAR AND LOUNGE

Sip, savor, and soak up the energy

Our Bar and Lounge is the ultimate hotspot for handcrafted drinks and bold Nikkei-style bites. Located on the buzzing main level, your guests can revel in the restaurant's electric atmosphere while enjoying the privacy of their own exclusive space. From Thursday to Saturday, the vibe kicks up a notch with hypnotic beats from our underground DJs, setting the perfect rhythm for nights that linger long after last call.

Capacity

Standing: 60





MAIN FLOOR EXCLUSIVE HIRE

Where Style Meets Spectacle

Our Main Level, with its floor-to-ceiling windows, is available for exclusive hire. Step into the full Nikkei experience in a vibrant, versatile setting that transforms effortlessly to suit any occasion. From the sweeping dining and lounge area to the state-of-the-art DJ booth, every detail is designed to create an atmosphere your guests will never forget.

Capacity

Standing: 60

Standing: 150

ITAMAE

Sushi Theatre at Its Finest

An intimate chef's counter where Chotto Matte's sushi masters craft bold Nikkei flavours right before your eyes. Fresh, vibrant, and unforgettable. For those seeking a more secluded experience, an optional partition can be arranged, transforming the space into an exclusive segment.

Capacity

Seated: 40





FIRST FLOOR EXCLUSIVE

Where Events Take Center Stage

Available for exclusive hire, our First Floor sets the scene for unforgettable celebrations, high-powered networking, or refined corporate dinners. Immerse your guests in the theatre of live dining - watch master chefs craft artistry at the open sushi counter and flames dance on the Robata grill. With a dedicated team orchestrating every detail and bespoke touches tailored to your vision, this is more than an event space - it's an experience designed to impress.

Capacity

Seated: 140

Standing: 220



CLAUDE'S

CLAUDE'S

Where Indulgence Meets Elegance

Step behind the doors of Claude's, our exclusive private dining sanctuary, and discover a world of elegance and allure. Your guests can be welcomed with signature cocktails in a luxurious private bar and lounge, before indulging in a dining experience that is as unforgettable as it is refined. Every moment is crafted for atmosphere, every details designed to leave a lasting impression.

Capacity

Seated: 20

Standing: 50





EXCLUSIVE HIRE

Chotto Matte is a multisensory experience – delighting diners with a thrilling visual journey that unfolds through the space. Available for full exclusive hire, unleash the full potential of the space when hosting with us.

Chotto Matte offers diners an electrifying experience, from the masterful precision of the chefs to live entertainment and curated beats from leading underground DJs.

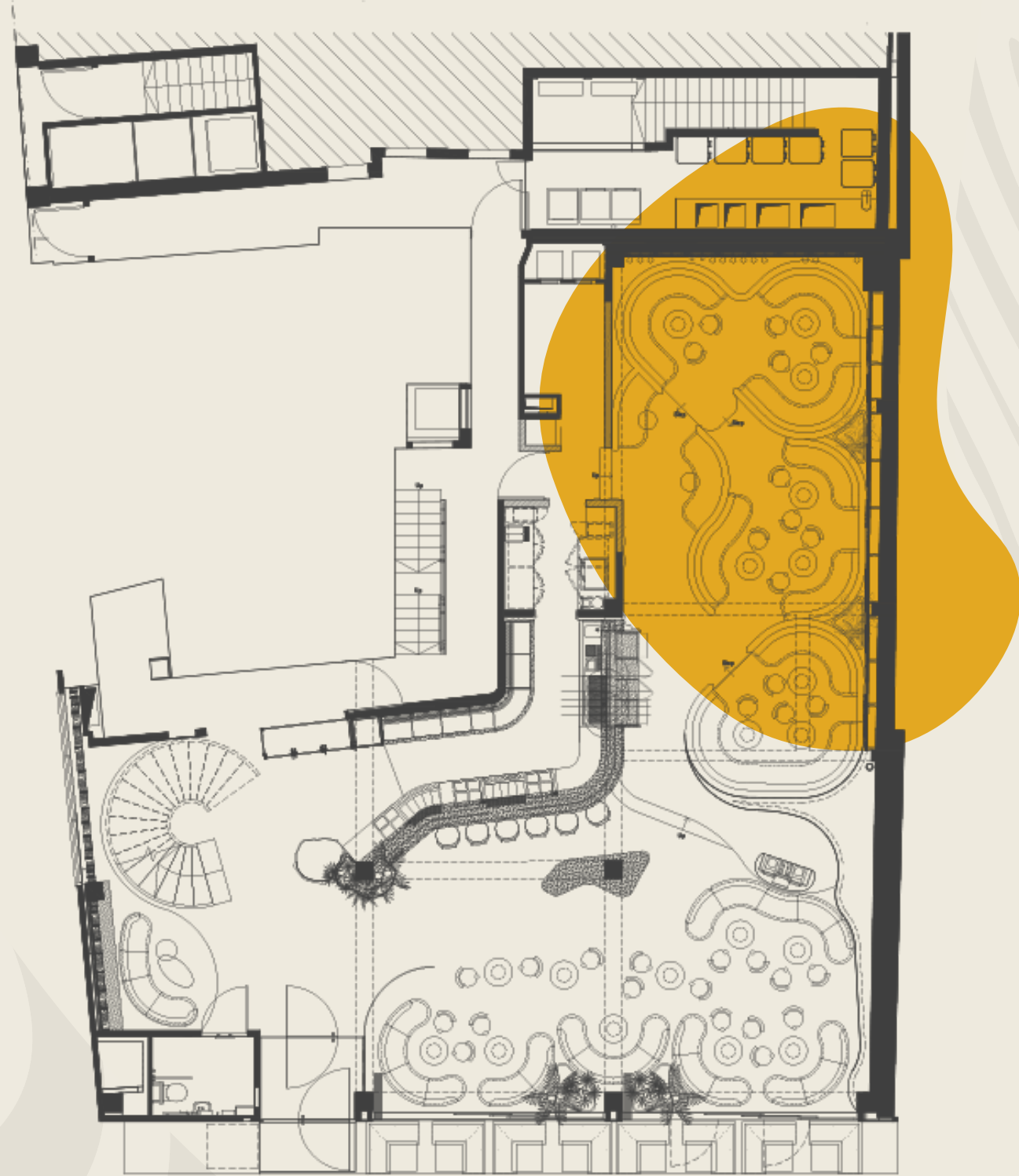
Capacity

Seated: 140

Standing: 400

FLOOR PLANS

THE LAVA LOUNGE



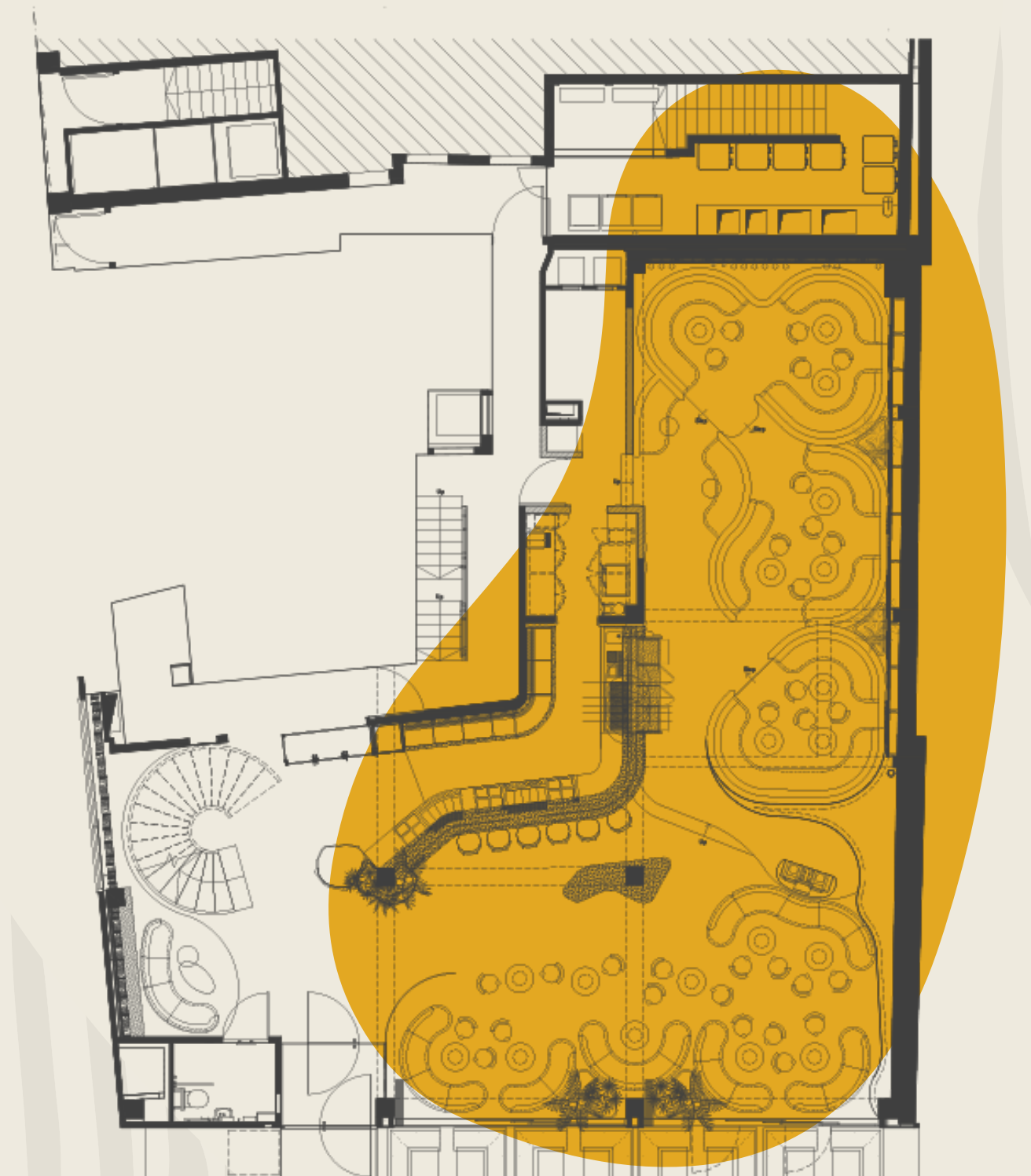
Capacity
Seated: 60
Standing: 80

BAR AND LOUNGE



Capacity
Standing: 60

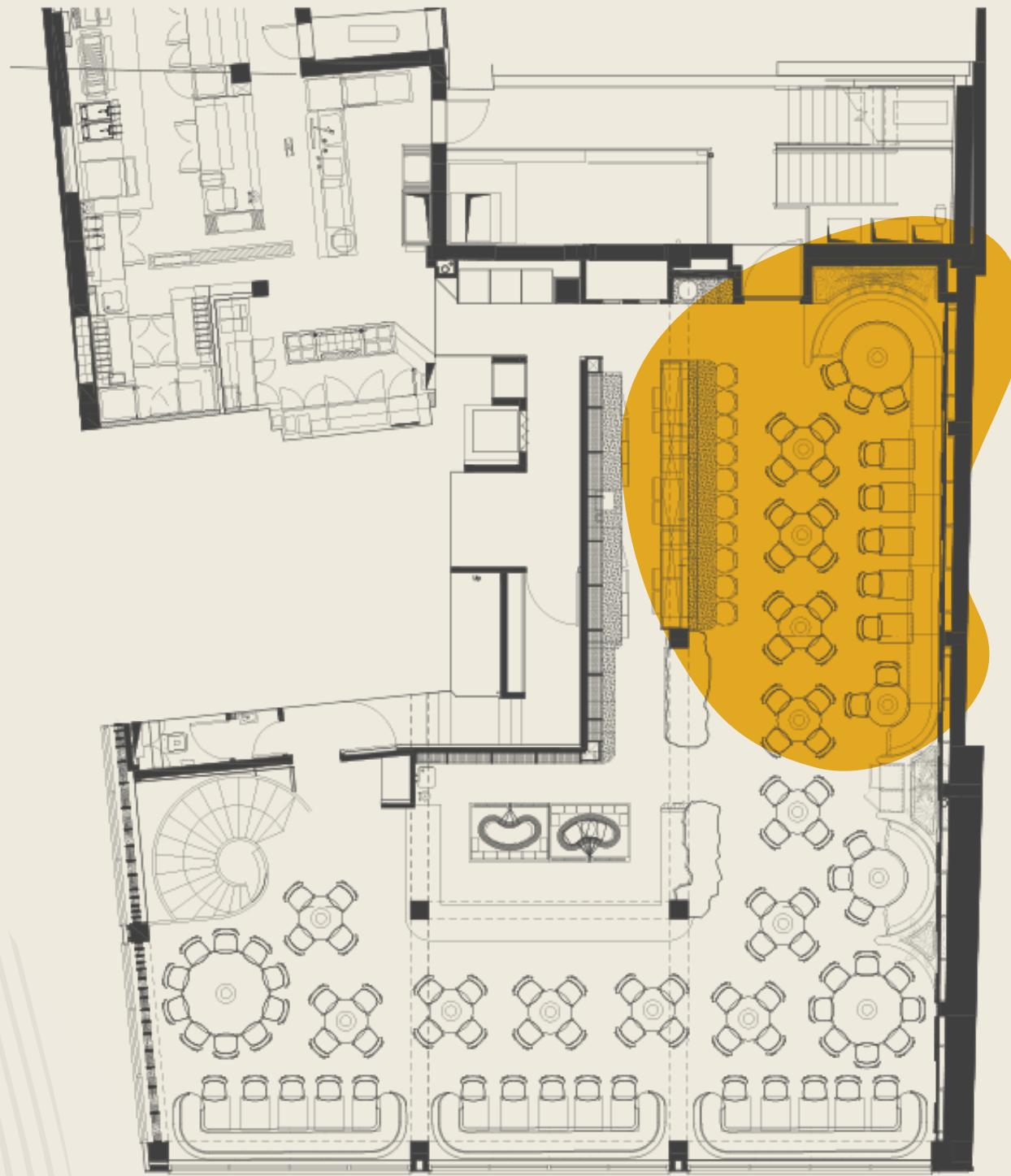
MAIN FLOOR



Capacity
Standing: 150

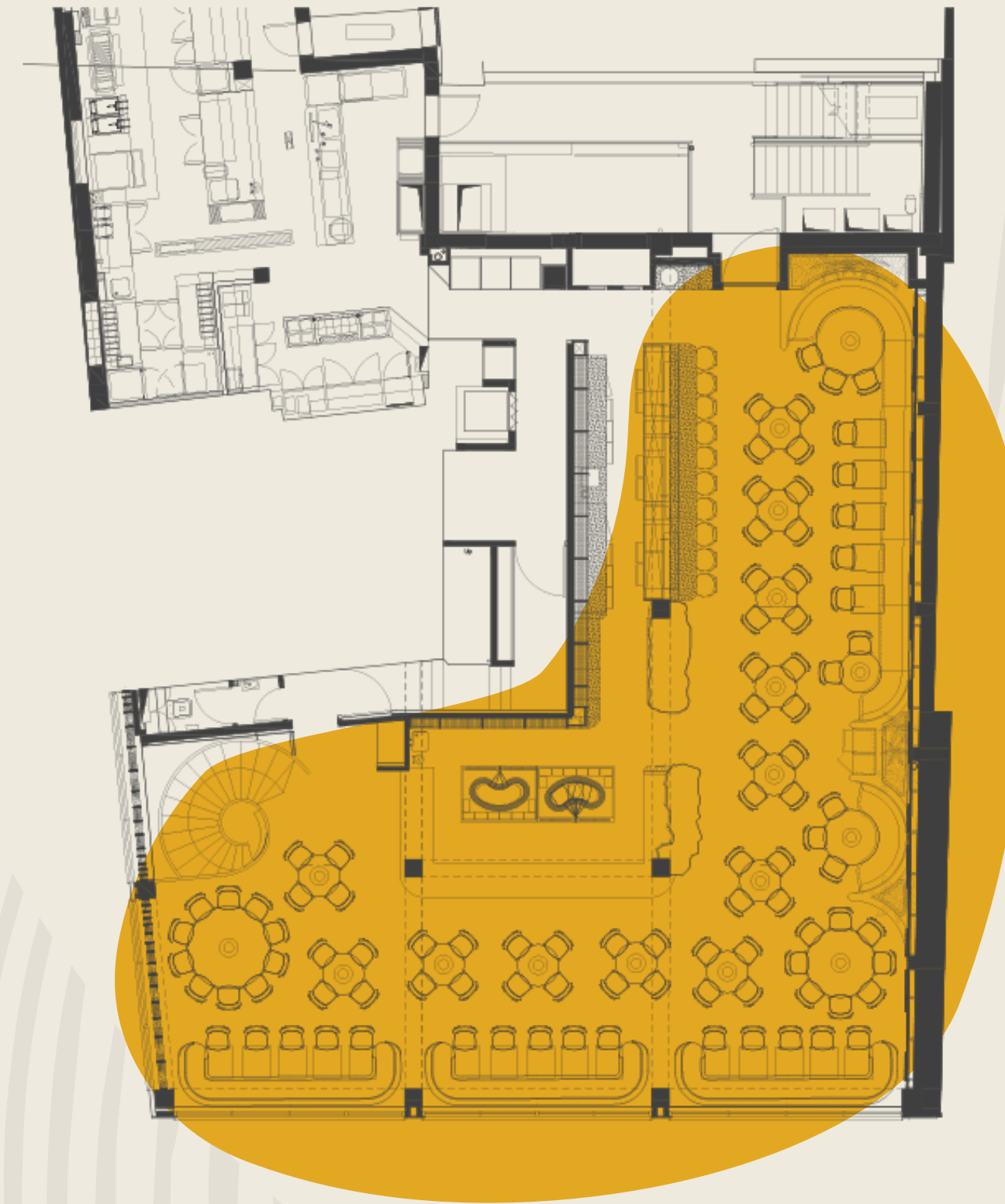
FLOOR PLANS

ITAMAE



Capacity
Seated: 40

FIRST FLOOR



Capacity
Seated: 140
Standing: 220



BESPOKE

Our dedicated team are on hand to elevate your event with customisable menus, personalised soundtracks, floral arrangements and bespoke table design to create a truly memorable experience.

Should you require specific production or extras please share these details with our seasoned event team who will be happy to discuss your options and coordinate accordingly.

For all event enquiries, please contact our dedicated events team on

E: soho.events@chotto-matte.com



Chotto Matte,
11-13 Frith Street, Soho W1D 4RB